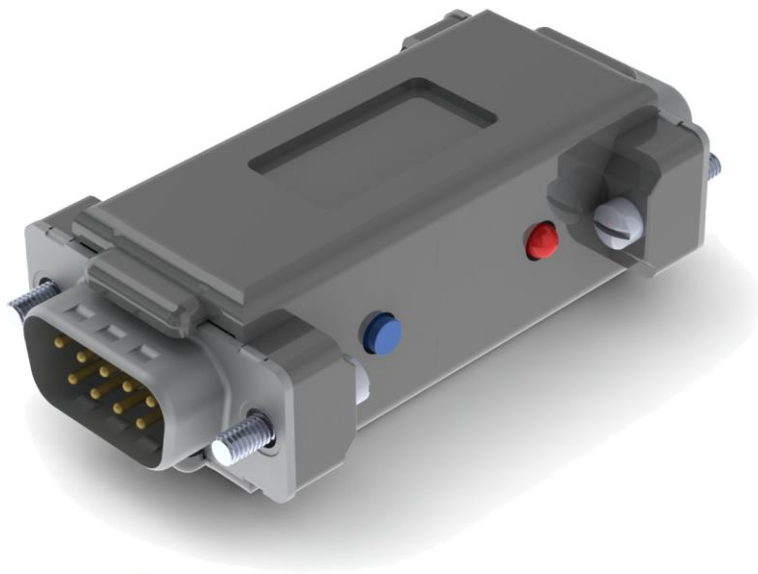


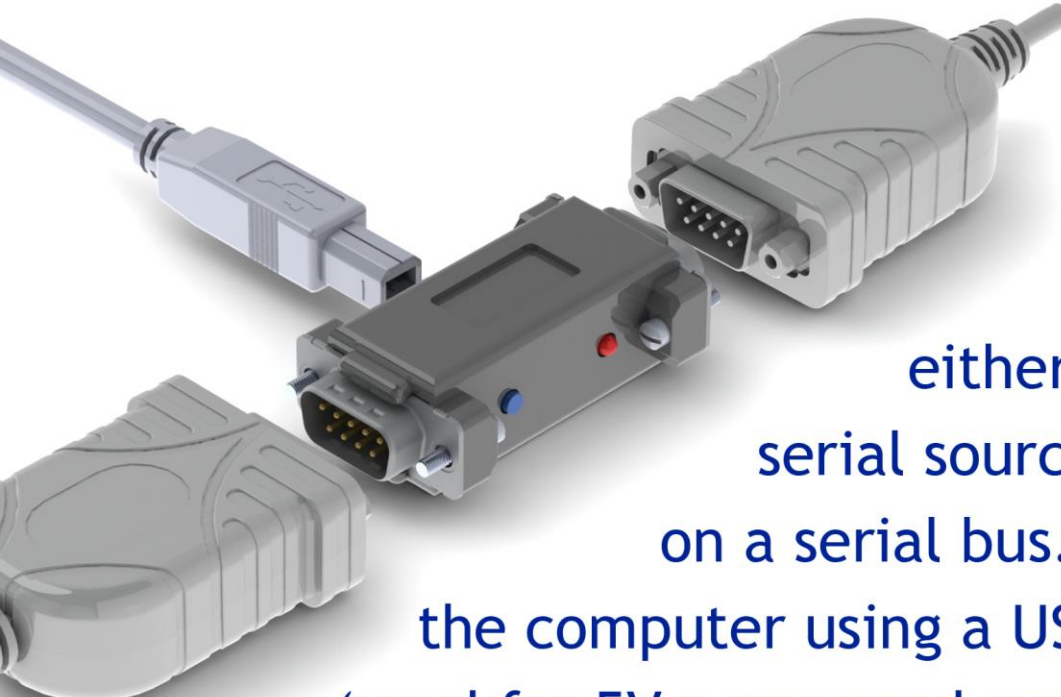
# SerialGhost

## QUICK START



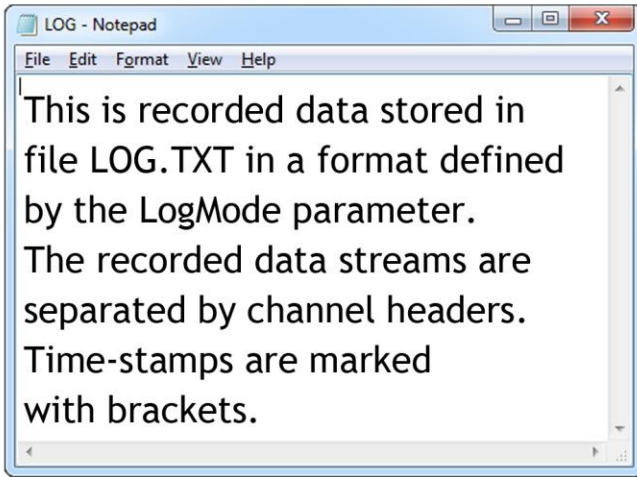
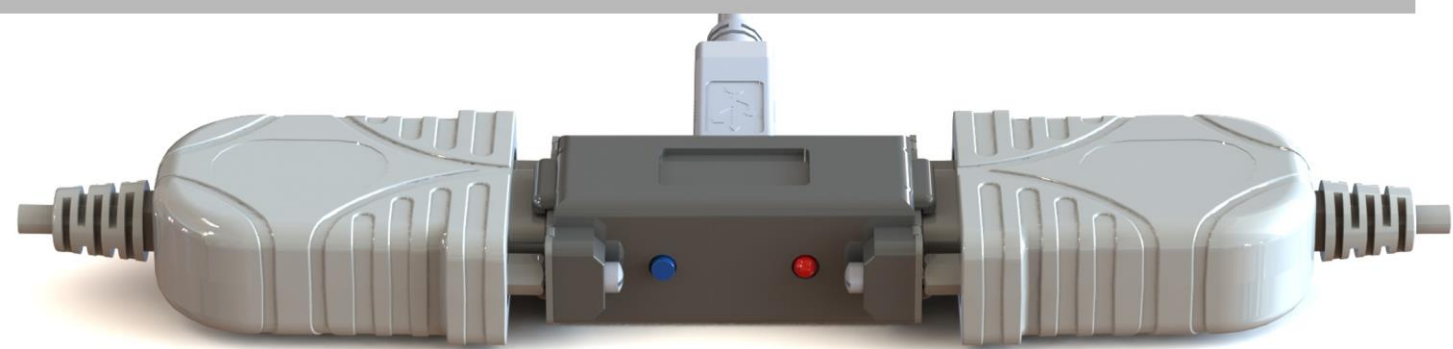
### Important tips:

- Device requires 5V DC power through USB-B connector
- To access data and configuration, connect to a computer using a USB data cable, then press and hold button
- Device needs to be configured to match monitored serial bus



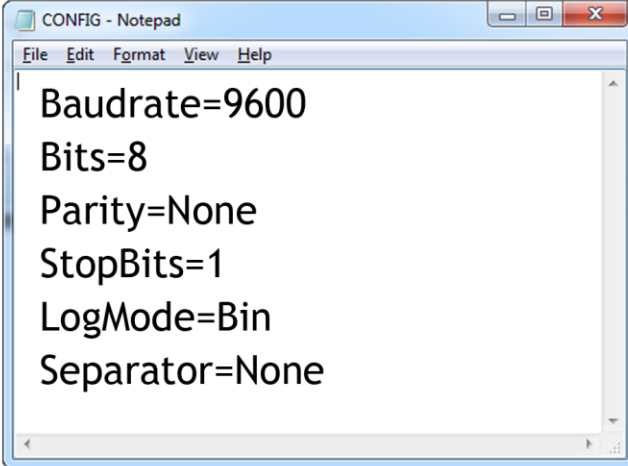
Connect the device either to a single serial source, or in-line on a serial bus. Connect to the computer using a USB A-B cable (used for 5V power and configuration).

Press and hold the side button to switch to flash drive mode



Recorded data is stored in file **LOG.TXT**

# To configure the device edit file **CONFIG.TXT** in the flash drive main folder



```
CONFIG - Notepad
File Edit Format View Help
Baudrate=9600
Bits=8
Parity=None
StopBits=1
LogMode=Bin
Separator=None
```

Baudrate, parity, bit count and stop bits in CONFIG.TXT must match the actual serial bus configuration

# To set the internal clock create **TIME.TXT** in the flash drive main folder

Format = 24 / AM / PM (24h or 12h format)  
Year = 2020  
Month = 6 (1=January ... 12=December)  
Day = 25 (1...31)  
Hour = 13 (0...23 for 24h, 1...12 for AM/PM)  
Minute = 54 (0...59)  
Second = 38 (0...59)

Time-stamping available only in TimeKeeper version

# The device can be configured through parameters in CONFIG.TXT

BaudRate=9600	Use DualPort=No	(up to 230400)
Bits=8	for common port configuration	(5/6/7/8)
StopBits=1		(1/1.5/2)
Parity=No		(Even/Odd/Space/Mark/No)
DualPort=Yes	Use DualPort=Yes	(Yes/No)
BaudRate2=115200	and define the second port parameters if configuration of both ports differs	(up to 230400)
Bits2=8		(5/6/7/8)
StopBits2=1		(1/1.5/2)
Parity2=No		(Even/Odd/Space/Mark/No)
LogMode=Bin		(Bin/Hex/Dec)
EnablePort=Both		(Port0/Port1/Both)
Separator=None		(Space/NewLine/Tab/Comma/None)
Separator2=NewLine		(Space/NewLine/Tab/Comma/None)
Header=MyDevice		(used when header is inserted)
HeaderInterval=2.0		(seconds of inactivity for header)
ChannelHeaders=Yes		(Yes/No)
Channel0Header=Ch-Zero		(used for first channel)
Channel1Header=Ch-One		(used for second channel)
Timestamping=Yes		(Yes/No, TimeKeeper version only)
TimeFormat=24		(24/Am/Pm, TimeKeeper version only)
DisableLogging=No		(Yes/No)
UsbMode=Flash		(Flash/Com, switches between flash drive mode and Virtual COM port mode)